

GISWEST



Hans Van den Heede

Datawarehousing / GIS

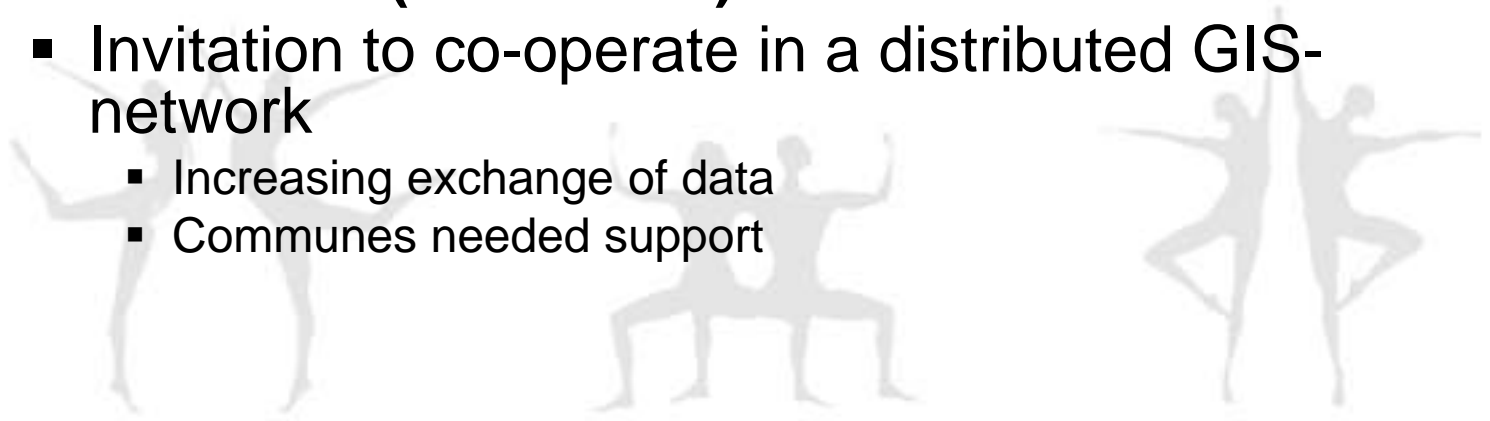
- Flanders
 - 5 provinces – 308 communes
 - West-Flanders – 64 communes
 - 2 major tasks:
 - support communes
 - Knowledge partner



GIS WEST

- **GIS WEST (1998-2003)**
 - Stimulating use of GIS
 - GIS-software
 - Maps
 - Training
 - Succes (62 of 64 communes)

- **GIS WEST II (2005-2010)**
 - Invitation to co-operate in a distributed GIS-network
 - Increasing exchange of data
 - Communes needed support



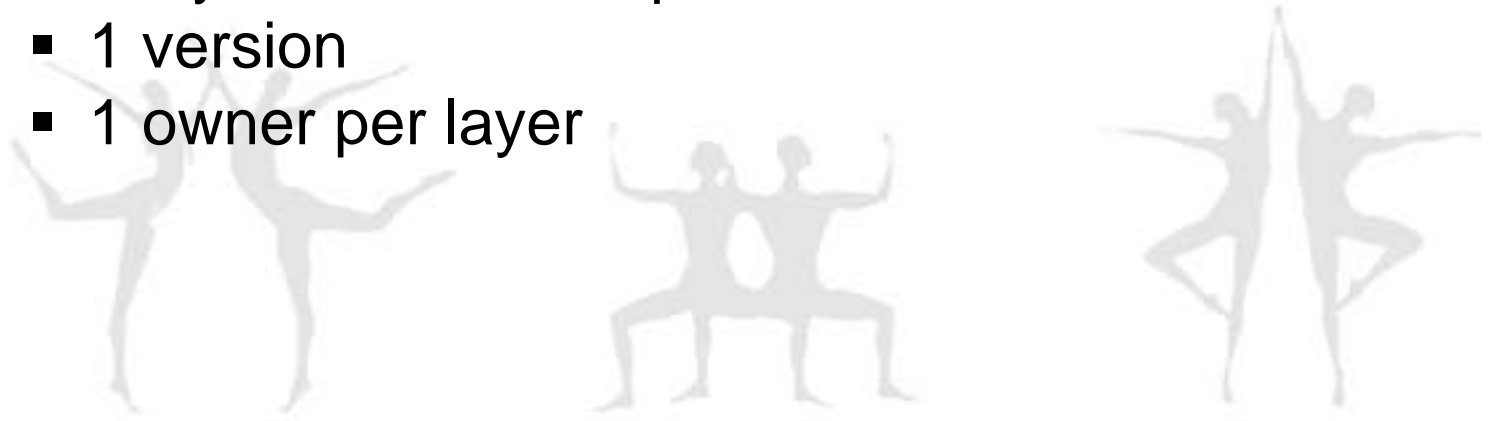
GIS WEST

- **GIS WEST developed 3-way strategy for Geoservices :**
 - Data
 - Processing
 - Presentation
- **Province provided network for Geoservices**



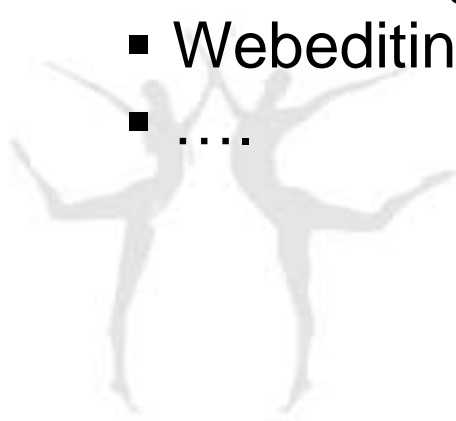
GIS WEST – Data

- **Provincial Geodatabase**
 - Provincial data
 - Available for communes without investment
 - Part of GDI-Flanders
- **Assets of a Provincial Geodatabase**
 - 1 layer per theme
 - 1 layer covers area province
 - 1 version
 - 1 owner per layer



GIS WEST – Processing

- **Provincial infrastructure available**
- **Services via ArcIMS-server**
 - Geoservices
 - Feature Geoservices
- **Services via ArcGIS-server**
 - Several modules available
 - Geocoding
 - Webediting
 -



GIS WEST – Presentation

- **Consultation?**
 - Consultation
 - Provincial geoservices
 - Ready to use
 - Possibility to integrate in website
 - Theme-orientated
 - Analysis
 - Use of geoservices in applications
- **Publication?**
 - Editing (datamanagement)
 - ArcGIS (1 license/commune available)
 - Webeditor
 - Upload

GIS WEST – Network

- **Internet**
 - Accessible to everyone
 - Public information
- **P-net**
 - Available for ‘public’ partners
 - ‘GIS WEST’ is provider
 - Information with privacy issues or protected data
- **Intranet**



GIS WEST – Back-end services

- **Access to Geodatabase**
 - Disconnected Editing (ArcGis)
 - Upload-module
 - Webediting
 - Alfanumeric Editor (AN editor)
- **Tools**
 - Monitor
 - Authentication en security
 - Geocoding

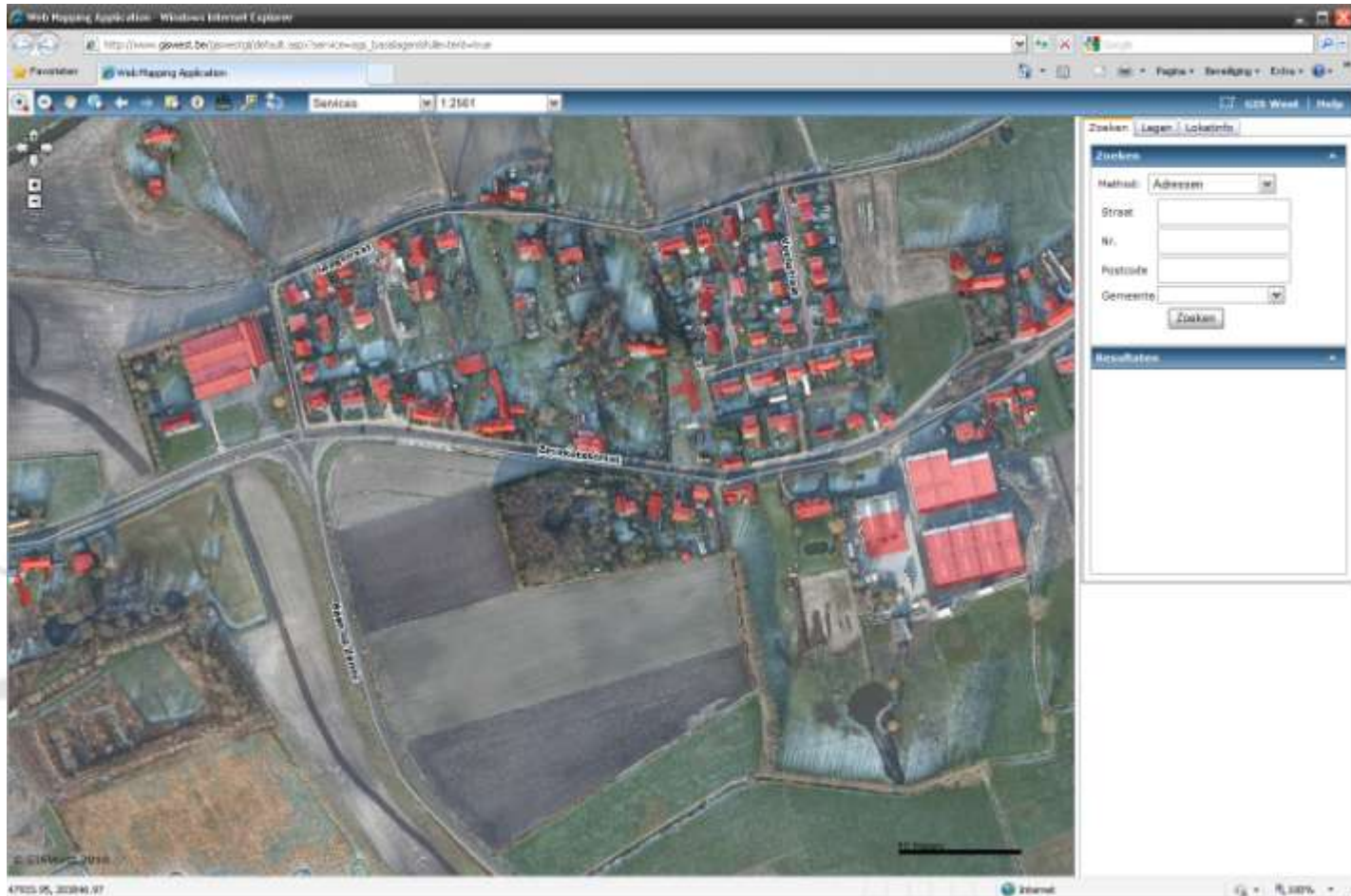


GIS WEST – Front-end services

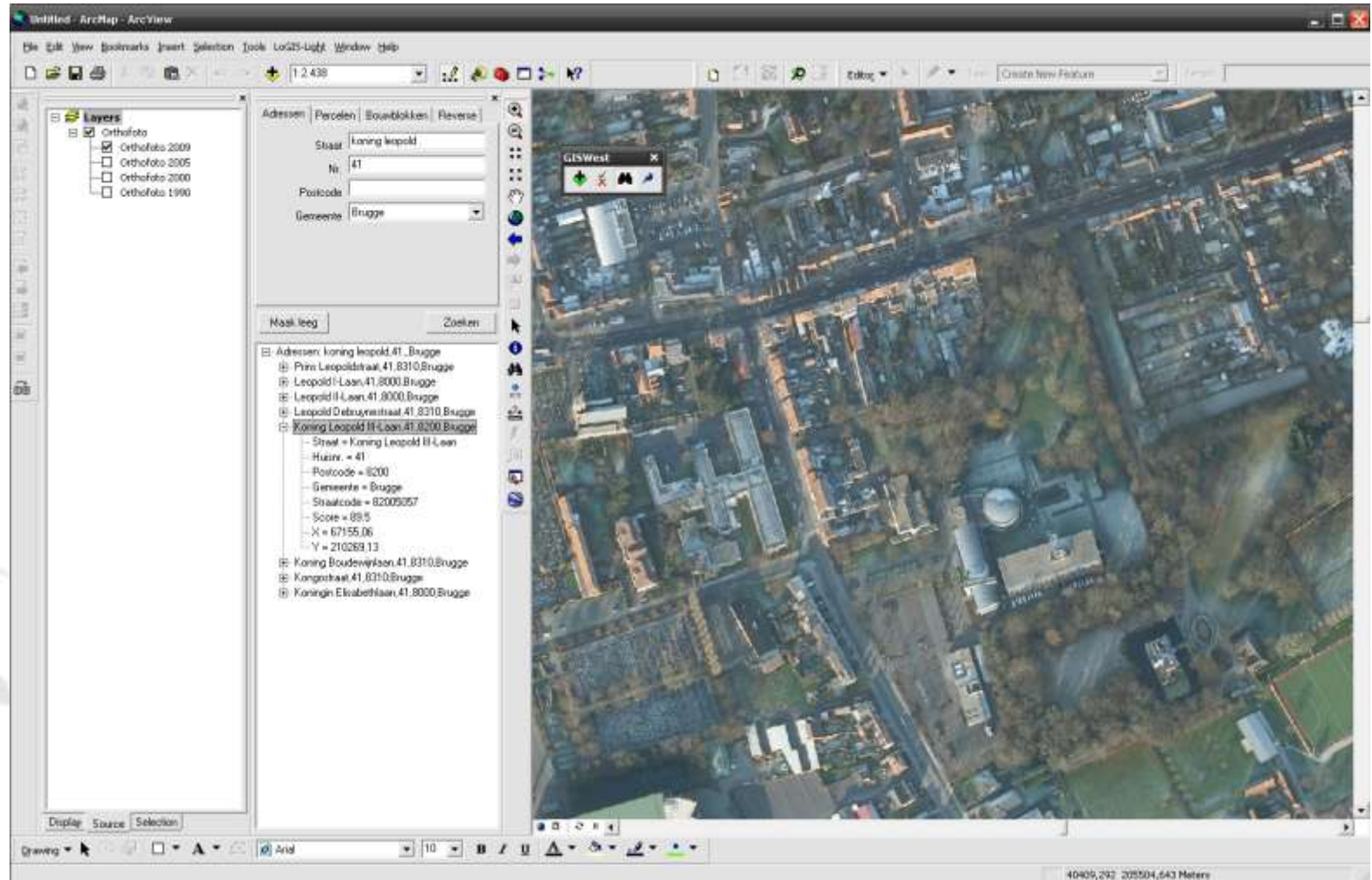
- **Consultation?**
 - Geoservices (webbrowser)
 - ArcGIS Explorer (free software)
 - ArcGIS 9.1 (analyses)
 - Geowebservices



GIS WEST – Front-end services: browser



GIS WEST – Front-end services: ArcGIS



Assets GIS WEST

- **Commune can use own infrastructure. Provincial infrastructure and knowledge available.**
- **No redundancy of data.**
 - Same sources > no misunderstanding.
 - Shared responsibility.
- **Large and rapid dissemination of information**
 - Available for all users
- **No major investments for communes**



GIS WEST: Way ahead

Creating added-value on data

“Knowledge is the next Intel Inside”

Use of open standards for publication

User should decide on how to use data

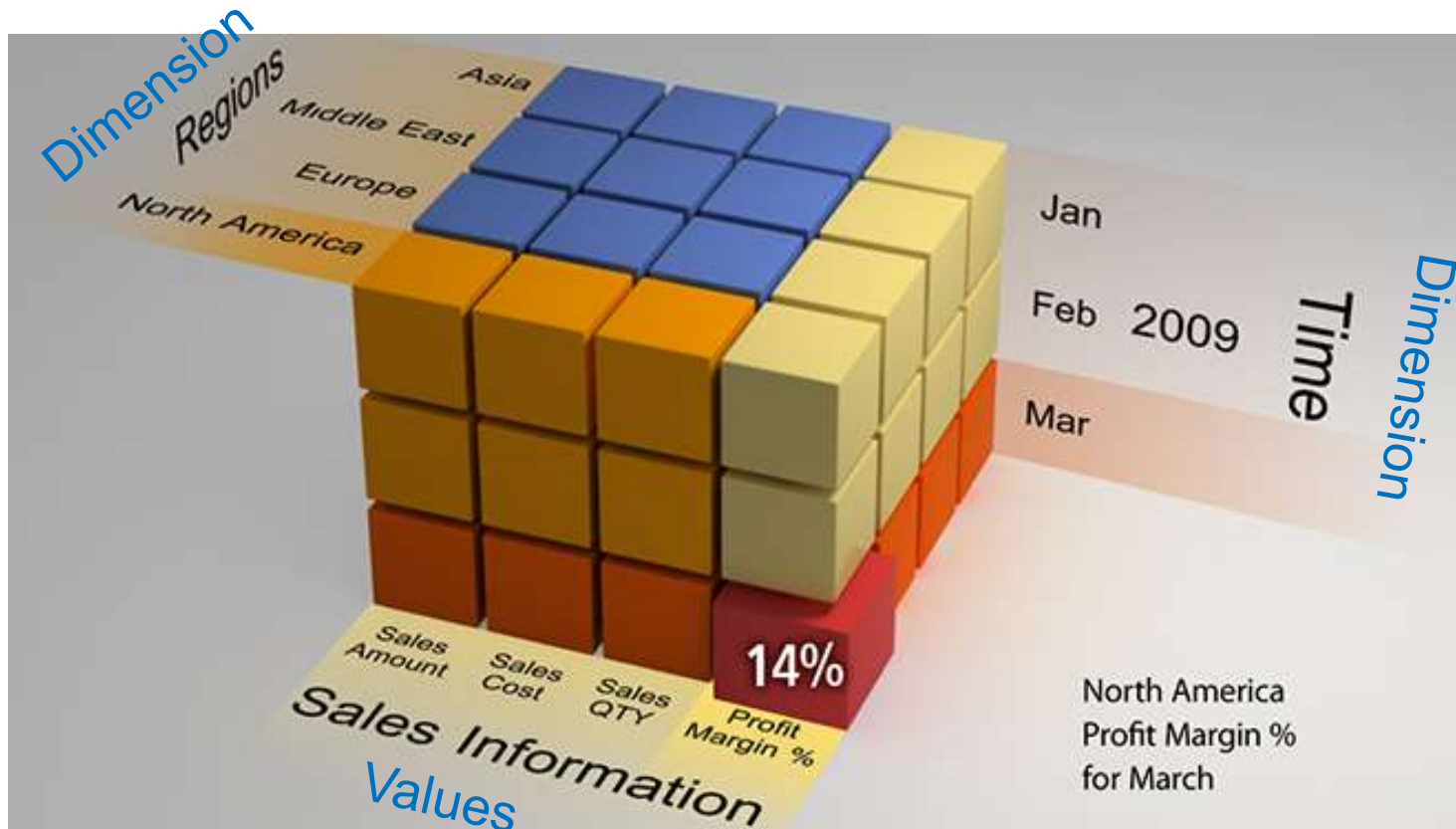
Geoservices in ArcGIS, WMS, WFS, Google Maps, ArcGIS Online....

Integration in GDI-Vlaanderen


Reduce redundancy

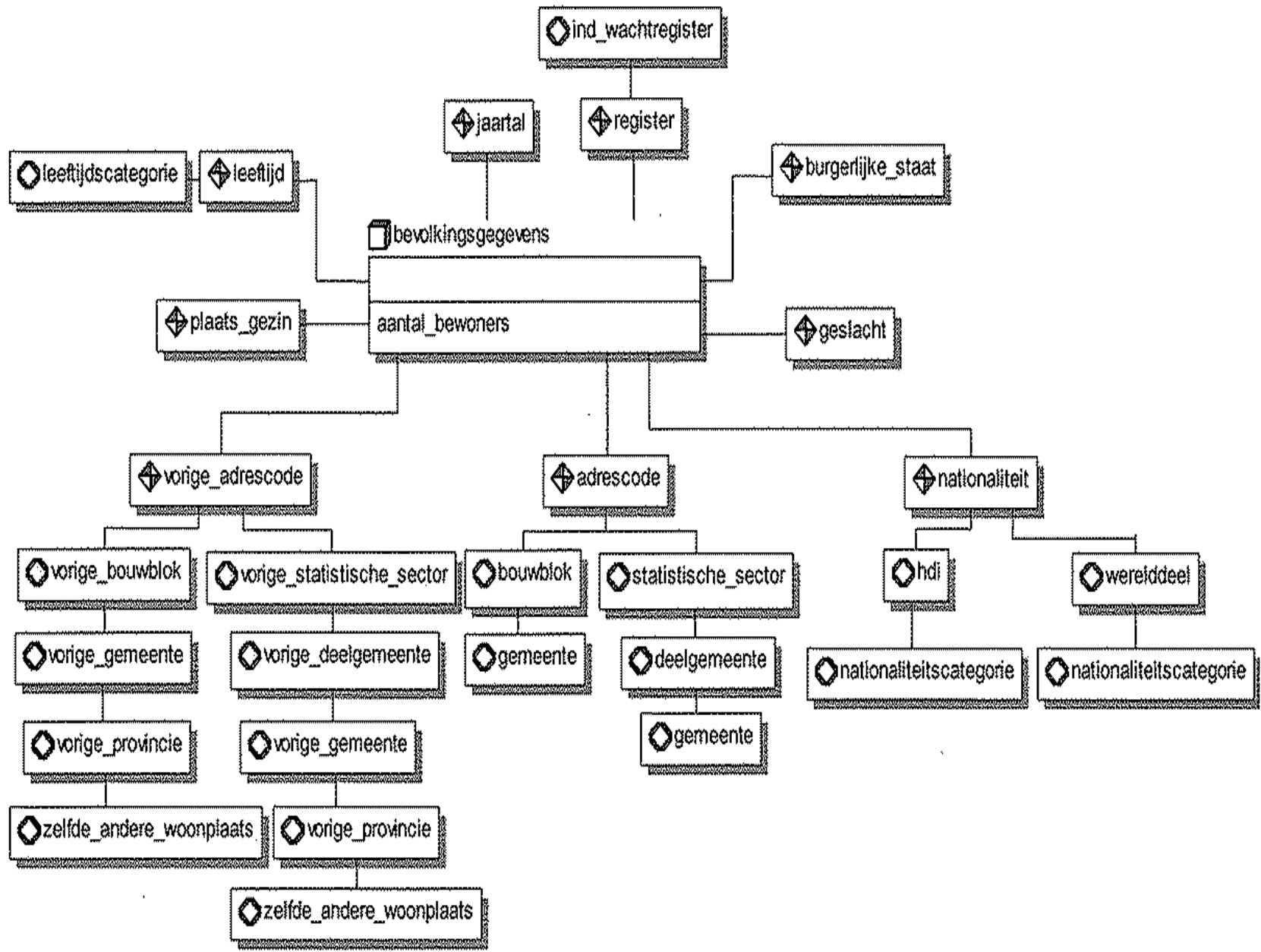


Task DWH= creating added-value on data



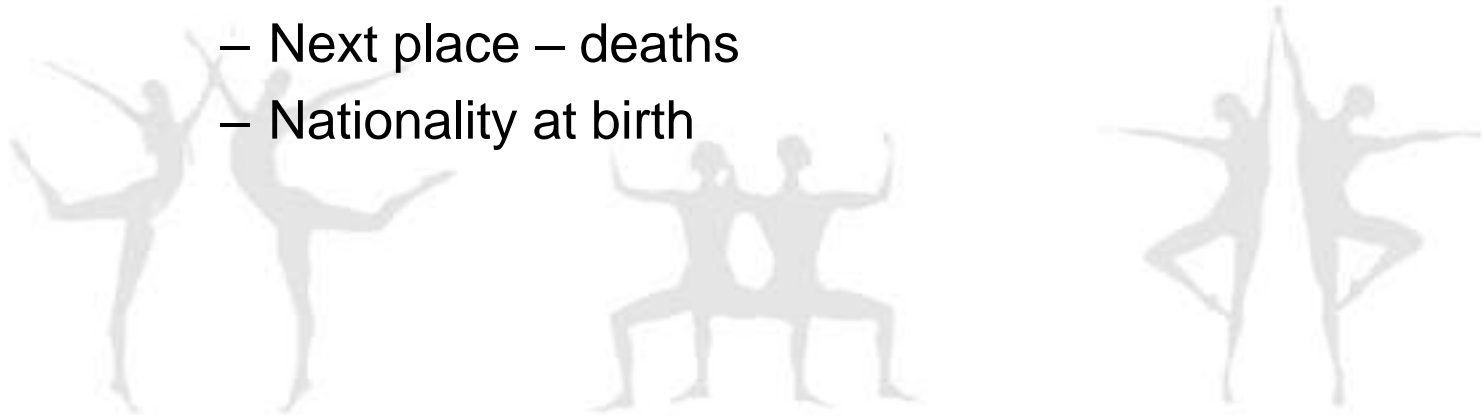
OLAP-database

- Datacollection: work other organisations
 - Way to use data
 - Example: demographic data
 - Age
 - Sex
 - Nationality
 - Domicile
 - Civil state
- dimensions
- 



Setup cube

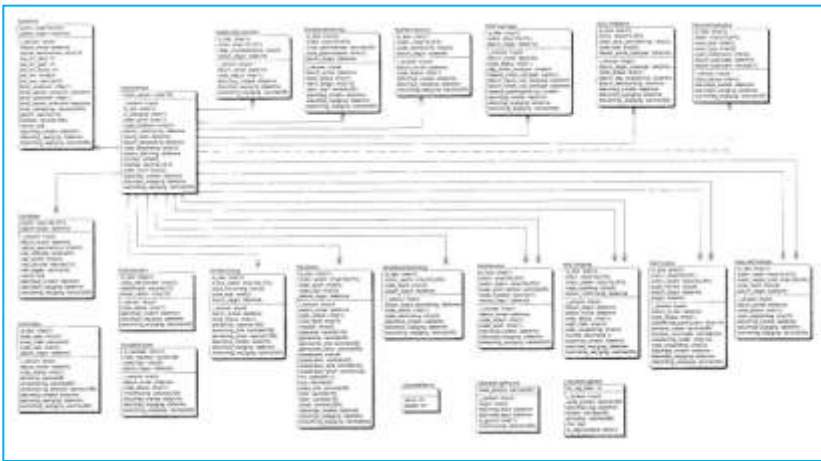
- Question: What do we want to know?
- Evolution > new dimensions
 - Example: demographic data:
 - Next place – deaths
 - Nationality at birth



Ex. Cube economie

Input

KBO



Geografisch

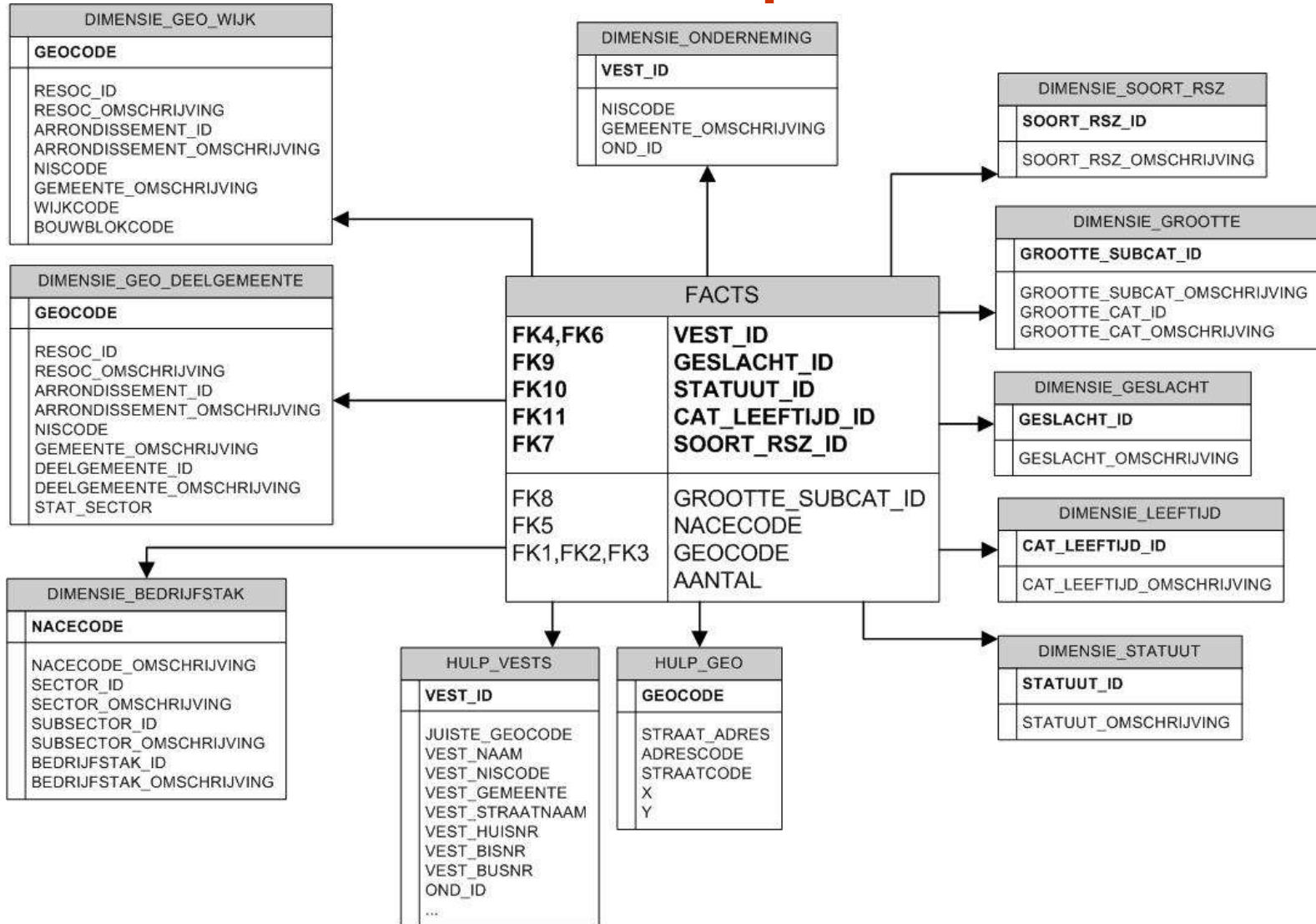


RSZ

	A	B	C	D	E
	Matric	statuut (*)	leeftijdsklasse	geslacht	Aantal arbeidsplaatsen
1					
2	35020030	G	30-39	V	6
3	35020030	G	40-49	V	7
4	35020030	G	50-59	V	12
5	35020030	NV	>=70	M	1
6	35020030	NV	20-29	M	1
7	35020030	NV	20-29	V	5
8	35020030	NV	30-39	V	5
9	35020030	NV	40-49	M	1
10	35020030	NV	40-49	V	4

Ex. Cube economie

Output



Geoloket - welzijn



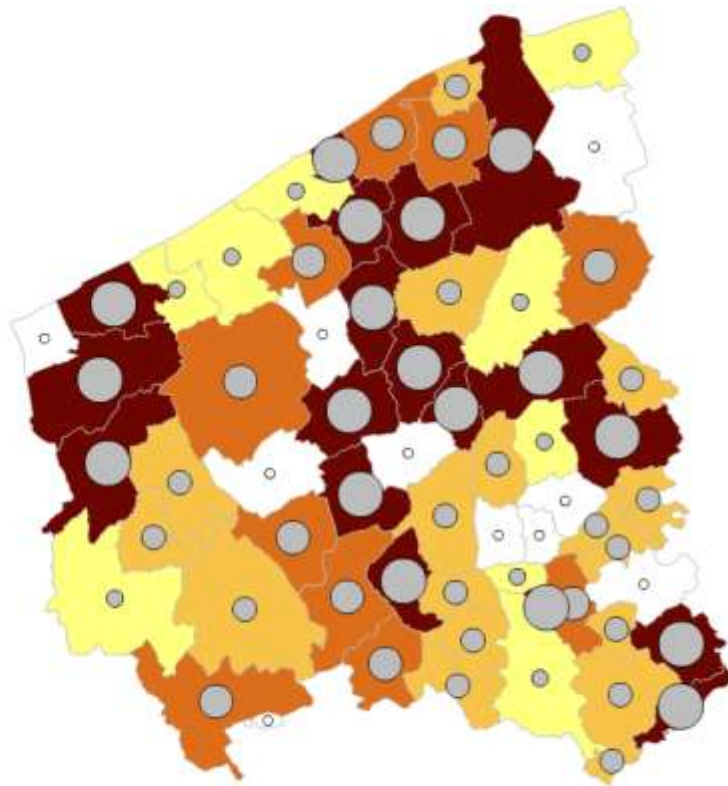
Geoloket Welzijn

Help GIS WEST

Parameters Zoeken Lagen Loket info

Hoofdgroep: Welzijn
Groep: Demografie
Categorie: gezinsgrootte - aantal
Variabele: aantal éénpersoonshuishoudens
Toon

Huidige variabele :
aantal éénpersoonshuishoudens



20 km

10 mi

Geoloket-DEK

The screenshot displays the Geoloket-DEK web application in a Windows Internet Explorer browser window. The browser's address bar shows the URL: <http://geoloket/Default/Viewer/Viewer.html?ViewerConfig=Http://GEOLOKET/Geocortex/Eventals/Geocortex331/REST/directie/Viewer/Viewer/VrtLabrech>. The browser's menu bar includes 'Bestand', 'Bewerken', 'Beeld', 'Favorieten', and 'Extra Help'. The browser's address bar also shows 'Pagina' and 'Beveiliging'.

The application interface features a header banner with the Provincie West-Vlaanderen logo and a search bar labeled 'Search for map features'. Below the banner is a 'Reports' panel on the left side, which contains the following instructions and options:

- 1. Please select a Report Type, and Output Format.
Report Type:
Output Format:
- 2. Choose a selection type, and select an area on the map.
Your report will be created once your selection is complete.
Selection Type:

The main area of the application is a map showing a street network. The map is overlaid with numerous colored icons (red, blue, green, yellow) representing different data points or features. The map includes street names such as 'PIET DE BEVERINGE LAAN', 'KURETENLAAN', 'LAUDE VUURNE STRAAT', 'WIEP STRAAT', 'SIE EN DAN', 'SPOORWEG', 'KOLLENWEG', 'KURSTENLAAN', 'WESTVAALPAD', 'DOSSLAAN', and 'Ieperloekaan'. The map is displayed in a yellowish-green color scheme.

Geoloket-DEK

Vestigingsrapport.pdf - Adobe Reader

Bestand Bewerken Beeld Venster Help

14 / 22 67,8%

Gereedschappen Opmerking


Economische kaart rapport

DELTRONICS

Vestigingsnr: 2184496418

Adres: Diksmuidseweg 52
8900 Ieper

Activiteiten: Auto, motor: verkoop, garage, brandstoffen
Elektriciens
Immobiëlen



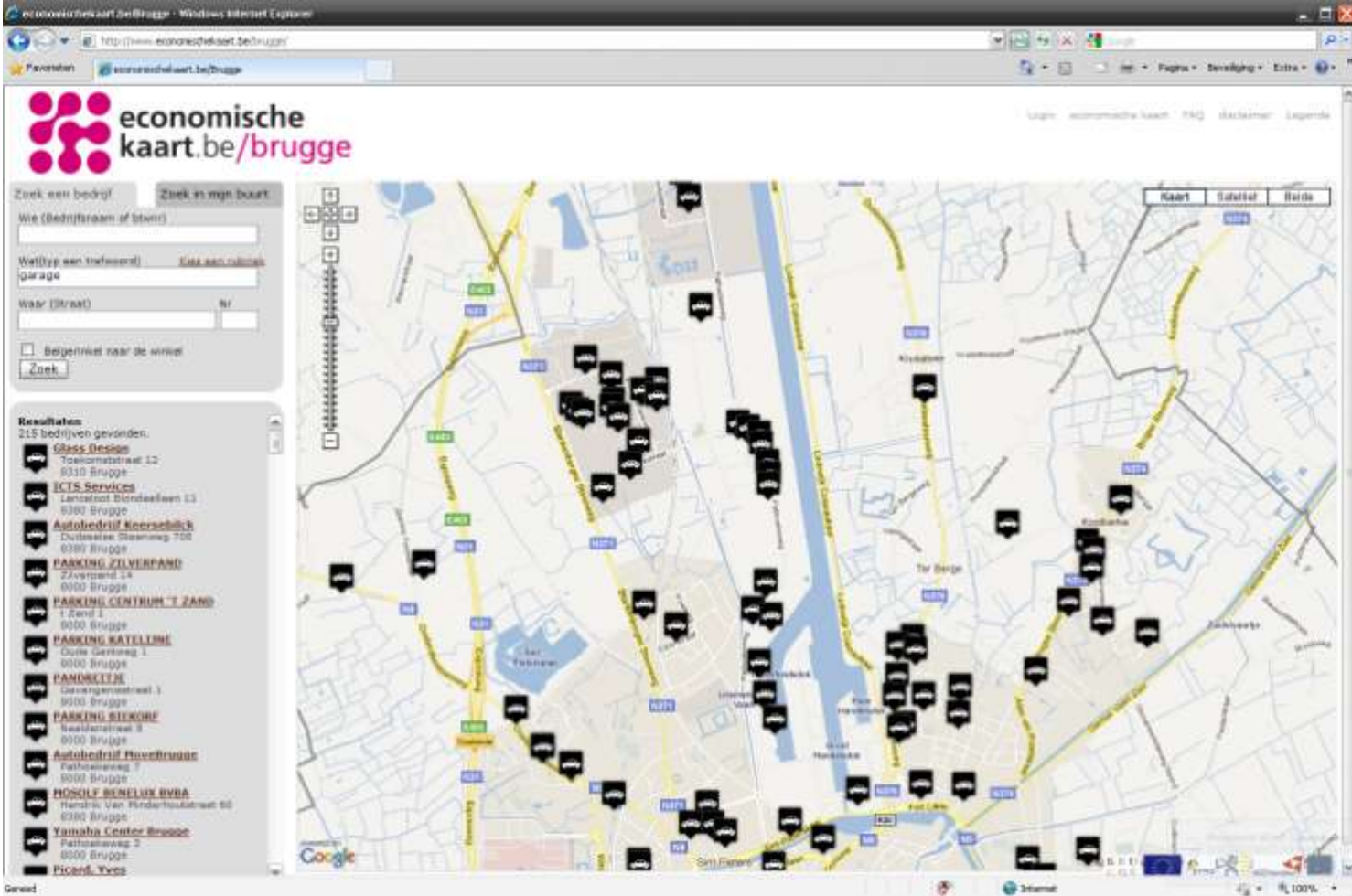
RSZ-gegevens

Geslacht	Statuut	Leeftijdscategorie	Aantal

Historiek

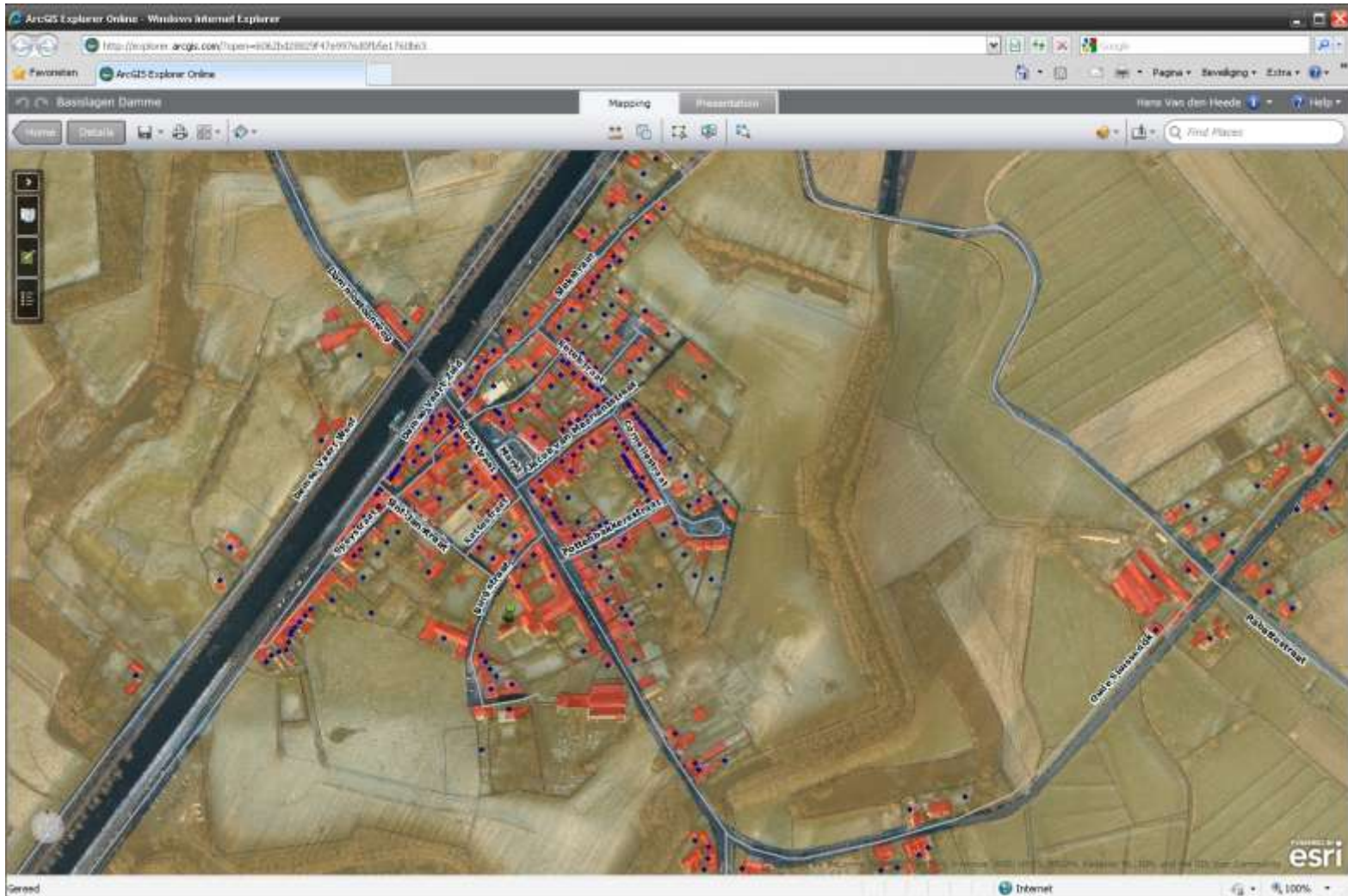
Datum	Soort Wijziging	Oude informatie	Nieuwe informatie

DEK – Google Maps



The screenshot shows a web browser window displaying the 'economische kaart.be/brugge' website. The page features a search interface on the left and a map of Bruges on the right. The search interface includes fields for 'Zoek een bedrijf' (Search a company), 'Zoek in mijn buurt' (Search in my neighborhood), 'Wie (Bedrijfsnaam of town)' (Who (Company name or town)), 'Wat (Typ een telefoonnr.)' (What (Type a phone number)), 'Garage', and 'Waar (Straat)' (Where (Street)). A 'Zoek' (Search) button is located below these fields. The search results list 215 businesses, including 'Glass Design', 'ICTS Services', 'Autobedrijf Keersbick', 'PARKING SILVERPAND', 'PARKING CENTRUM T ZAND', 'PARKING SATELITE', 'PANDKELDE', 'PARKING BIEKORE', 'Autobedrijf Hiverbrugge', 'MOBILE BENELUX BVBA', and 'Yamaha Center Brugge'. The map shows various streets and landmarks in Bruges, with black icons representing business locations. The browser window title is 'economische kaart.be/brugge - Windows Internet Explorer' and the address bar shows 'http://www.economischekaart.be/brugge'.

ArcGIS Online



Questions?

Contact:

- Hans Van den Heede
Diensthofd Datawarehousing / GIS
- T + 32 50 40 34 84
E hvdh@west-vlaanderen.be

