

# The Flemish SDI - The Flemish Geographical Information Agency

Leen De Temmerman  
Jo Van Valckenborgh

# SDI-Flanders framework

## ■ 1995

- SDI-Flanders (Flanders Region – Belgium)  
= collaborative framework in order to develop and implement a sound communication and management system for geographical information in Flanders
- Partnership between Flemish public authorities (local and regional)

=> The **Flemish Geographical Information Agency (AGIV)**  
= the executive body of the SDI-Flanders-cooperation  
(former Support Centre SDI-Flanders)



# Mission

AGIV has

to **facilitate**

the **optimal use of**

**geographical information**

in **Flanders**



# AGIV: tasks

- Coordination - standardisation



- Geo-Information production and distribution

GRB – CRAB -..



- Geo-services



LARA



WMS-services

FLEPOS



GDI-Vlaanderen testbed

# Assessment of the Flemish SDI by network stakeholders

- Stakeholders:
  - Spatialist (research)
  - Flemish SDI-council (Geo-ICT, academia),
  - SDI-working group (data providers and users – technical)
  - SDI-Steering committee (data providers and users)
  - the Flemish President's cabinet

# Assessment of the Flemish SDI by network stakeholders

- Compared to 2009 (study Spatialist)
  - same strengths and weaknesses
- The strengths are mainly attributed to the existence of an operational SDI-Flanders collaboration framework
- The SDI vision (2011 – 2015) and the future efforts
  - sustaining the strengths
  - and addressing the weaknesses



# Assessment by SDI network stakeholders

## **Weaknesses and *approach for addressing these weaknesses***

- Data actualisation (insufficient) (decentral management, management at the source, common initiatives with shared financing, capturing data once – multiple reuse,..)
- Lack of harmonisation (harmonisation, standardisation, common goals,...)
- Data supply does not meet requirements (identify the demand and tune the supply, demand driven <-> supply driven,...)
- Limited access to geodata (common (commercial) reuse policy and stimulate reuse by making data available for everyone, set up standardized network services,...)
- Limited capacity and resources (finances, education, coaching,...)



# Assessment by SDI network stakeholders

## *Advices and approach to implement these advices*

- Authentic data (SDI-Flanders decree)
- Stimulate and strengthen the demand & use (process integration)
- Multidisciplinary approach (diversification in use and targeted audiences)
- Setup a *demand driven*-supply chain (communities)



# The geoportal: 3 communities

## 1. Community “a public platform”

*Public access, central gateway: easy & free use (google maps/bing maps grand cru)*

- Citizen, policy makers, officials, mobile users

- Information
  - Cartographic themes (nature, agriculture, water, ...)
  - Social themes (living, health, waste, ... )
  - POI's
  
- Easy mouse-driven map interface
  
- Supporting services
  - Route mapping
  - Geocoding
  - Check-in (updating, quality improvement)

# The geoportal: 3 communities

## 2. Community “SDI-Flanders platform”

### *SDI-Flanders access: the main node of the Flemish SDI*

- Professional GIS-users, policy makers, officials
  - Centralized publication of public geographic data and services → link with EU INSPIRE geoportal
  - Access to geographic data for (commercial)reuse
- 
- Legal obligations
    - INSPIRE directive - Flemish SDI decree
      - Discovery service, view services, metadata application, SDI-viewer, e-commerce, download services
      - Check-in
  - Meeting place for SDI-Flanders members
    - Document exchange system
    - Forum, blogs, social media
    - Wiki



# Flemish SDI 2011-2015

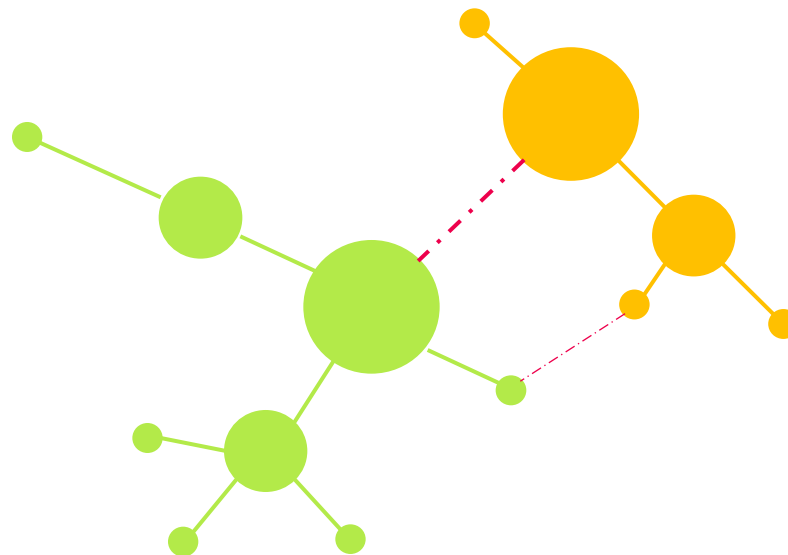
## 3. Community “The professional platform”

### *Professional access – applied solutions:*

- process integration, (commercial) reuse
- Public and private sector offer : applications, webservice, API's, ...
- Added value through integration and innovation
- Catalogue of public and private applications, services, api's
  - Proces integration through services -> more use of data -> more feedback (check-in service) -> better quality for less money
- Capturing the demand
  - Users can provide feedback
  - Discussion forum
  - Catalogue of public and private research projects, public tenders

# Flemish SDI 2011-2015

- The Geoportal development will emphasize the **central gateway approach** from a user's viewpoint.
- Even more important is the **decentral supplier chain** through the SDI-Flanders' network nodes



# Flemish SDI: status of services

## ■ Services

- Metadata

- SDI-Flanders schema's
- Discovery service
- Metadata web application



- View services

- WMS
  - 7 INSPIRE conform WMS (annex I)
  - Large scale map view service

# Flemish SDI: status of services

- Services
  - View Services
    - Tile-based services
      - Large scale map TMS, WMTS
      - Ortho photos TMS , WMTS
  - Webservice API's – decentraal management of authentic data , check-in service (maintenance, updating)
    - Address services are available

# Flemish SDI: Capacity building

## ■ Education: Flemish SDI Training

- Content
  - Policies (Law, implementing rules, ...)
  - Data harmonisation
    - Models, technology
    - Lab
  - Metadata
    - Standards (ISO 19xxx)
    - Lab
  - Services
    - Technology: introduction
    - Standards
    - Lab
      - » Supplier
      - » Consumer



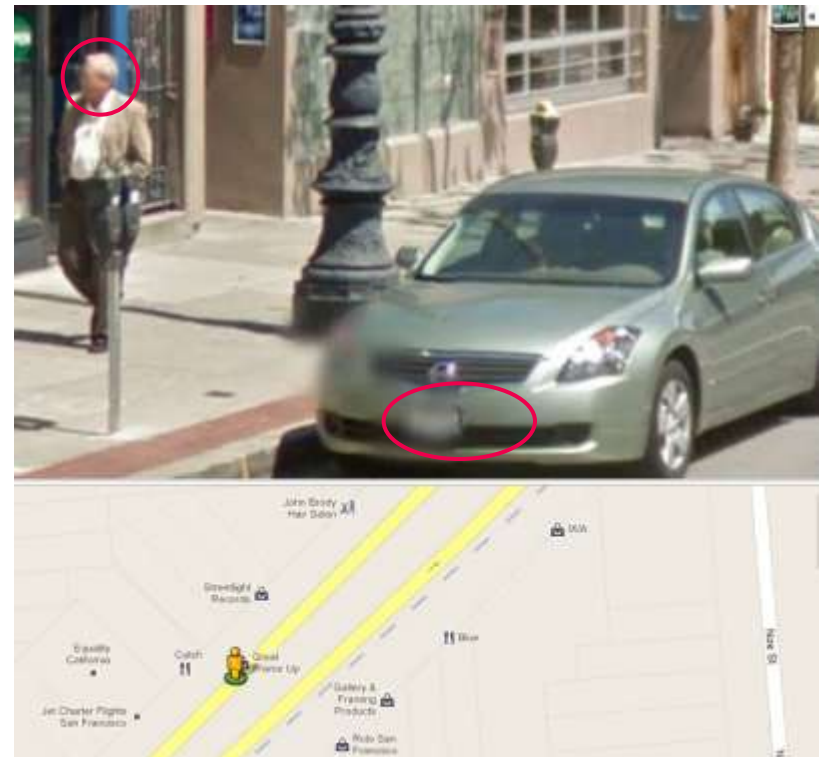
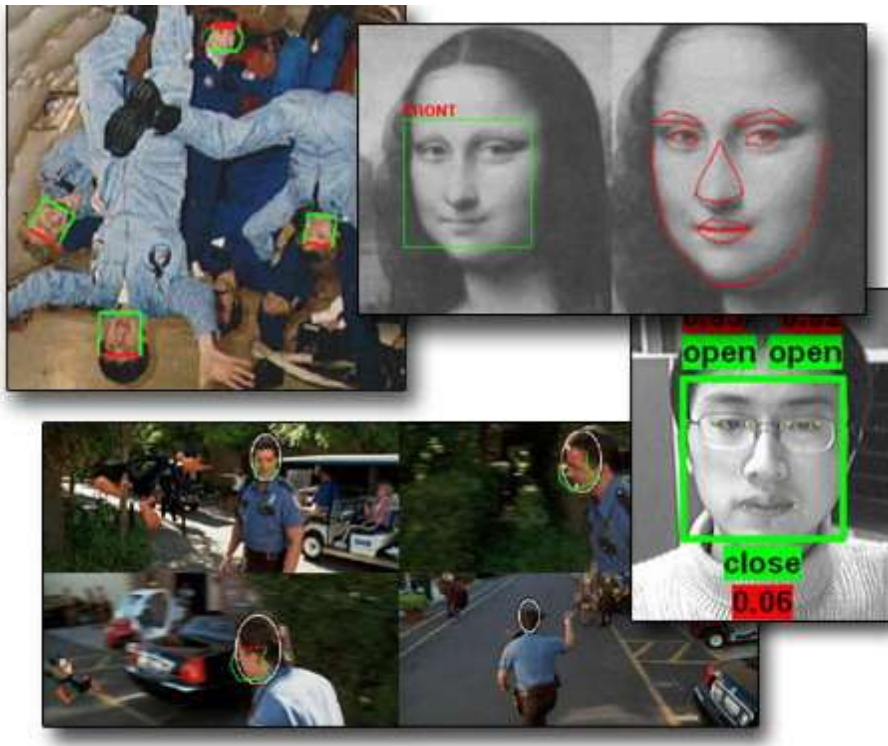
- Stand alone course
- Integrated in academic/professional training

+ info sessions, work shops, etc



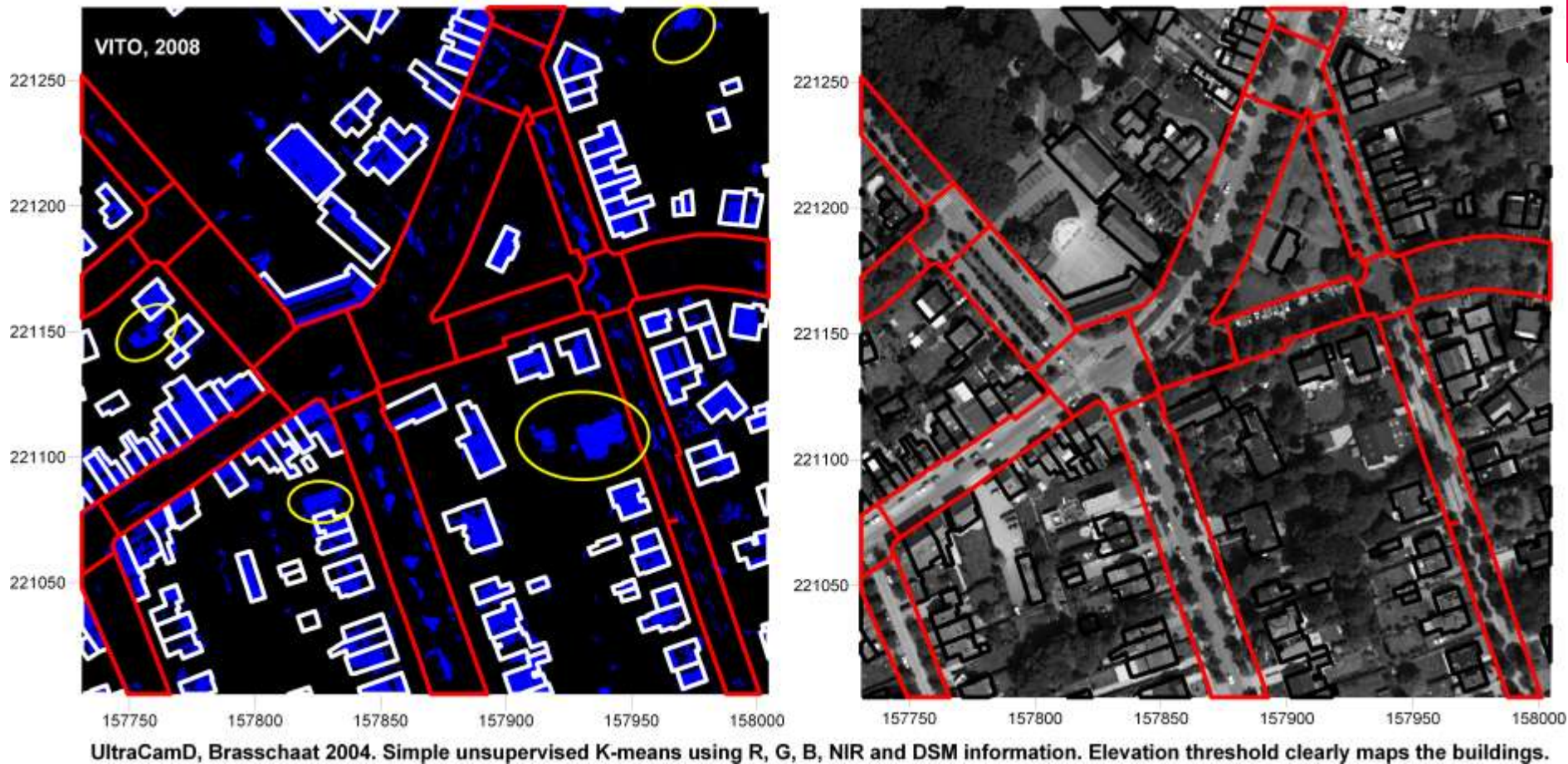
# Flemish SDI: Capacity building R&D (1)

- **On-the-fly blurring** image elements (faces, number plates,...)



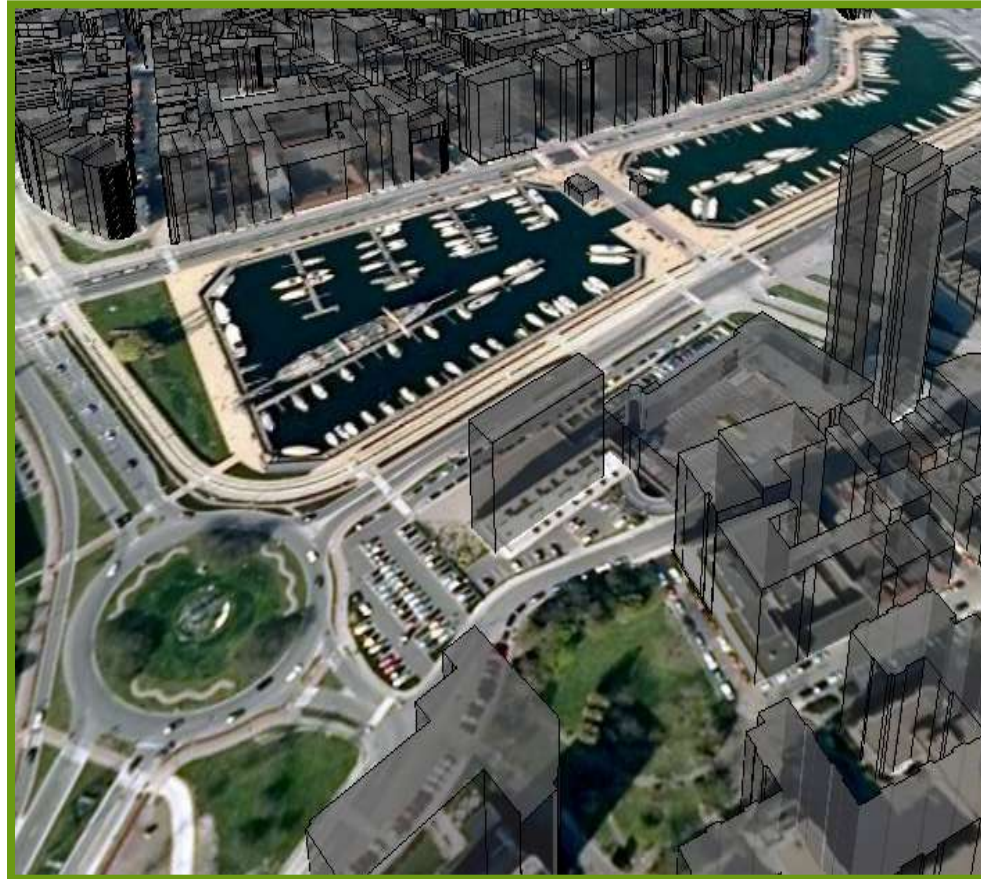
# Flemish SDI: Capacity building R&D (2)

- **Automatic change detection** for the updating of the GRB (= large scale map) via images through innovative algorithms



# Flemish SDI: Capacity building R&D (3)

- **Drapping** of mobile mapping images over 2.5D (or 3D) data; e.g. details of house fronts



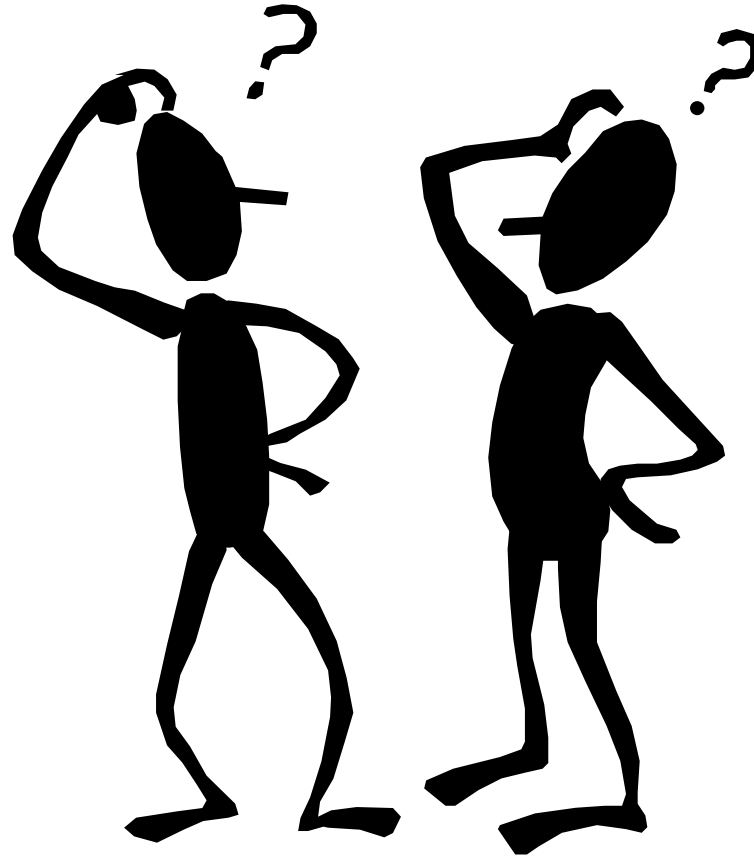
# Flemish SDI: Capacity building R&D (4)

- 2.5 D → 3 D - automatic



© Stad Gent – AGIV

# Thank you for your attention!



- [Leen.detemmerman@agiv.be](mailto:Leen.detemmerman@agiv.be)
- [Jo.vanvalkenborgh@agiv.be](mailto:Jo.vanvalkenborgh@agiv.be)